



Installing a Forge strut Brace to a BMW Mini Cooper S



After first ensuring that the vehicle is secured and that it is safe to work on your Mini, raise the hood to gain access to the engine bay.



Using a 13mm spanner or wrench remove the suspension strut securing nuts, three on each side.

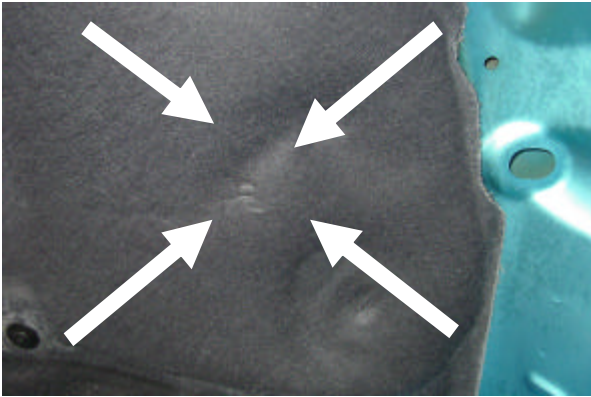


With the cross brace to end plate bolts loose (as supplied) fit the brace into position. Re-fit the suspension strut bolts (three per side) by hand at first to allow the plates to be relocated slightly if necessary

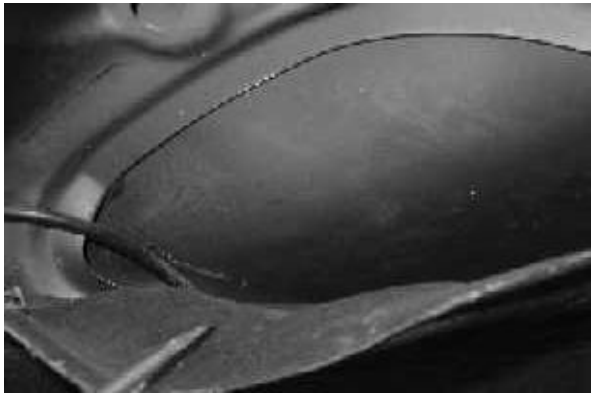


With both strut top plates secured with a suitable 13mm wrench you can now tighten the cross bar to the end plates using a spanner to hold the bolt whilst tightening the locking nut.

READ



The strut brace end plates will make contact with the sound deadening affixed to the underside of the hood. This will leave a slight indentation in the sound deadening over a period of time. If you wish to avoid this it will be necessary to trim the sound deadening material.



Before closing the hood for the first time ensure that any wiring or hoses are re routed from behind the sound deadening felt at this contact point to ensure that they are not forced into contact with the hood

On first closure of the hood after the fitment of the Strut Brace, lower the hood with care checking that no damage could occur to the outer skin of the hood.

Forge Motorsport will accept no liability for incorrect fitment or for damage caused if adequate clearances are not observed.