



NISSAN JUKE DIG- T 1.6T FMIC & HARDPIPE KIT

INSTALLATION INSTRUCTIONS



Please thoroughly read through and familiarize yourself with these instructions in their entirety prior to beginning any part of the installation process of any component. Please also ensure the vehicle and engine has cooled down sufficiently to avoid risking possible skin burns or other injury.

Tools Required:

Access to vehicle lift or floor jack and axle stands to support the vehicle

Small Flat blade screwdriver and Posi-drive screwdriver

10mm Spanner

13mm, 16mm Socket, Extension bar and Ratchet

5mm Allen key

Large Pliers

7mm Hose Clamp Driver.

2 Off Large Cable Ties

Safety eyewear, footwear, gloves and protective clothing are also recommended.

Engineered for performance

1. Raise the vehicle on a ramp or suitable axle stands, to allow access to the underside of the front of the car. Open the bonnet.

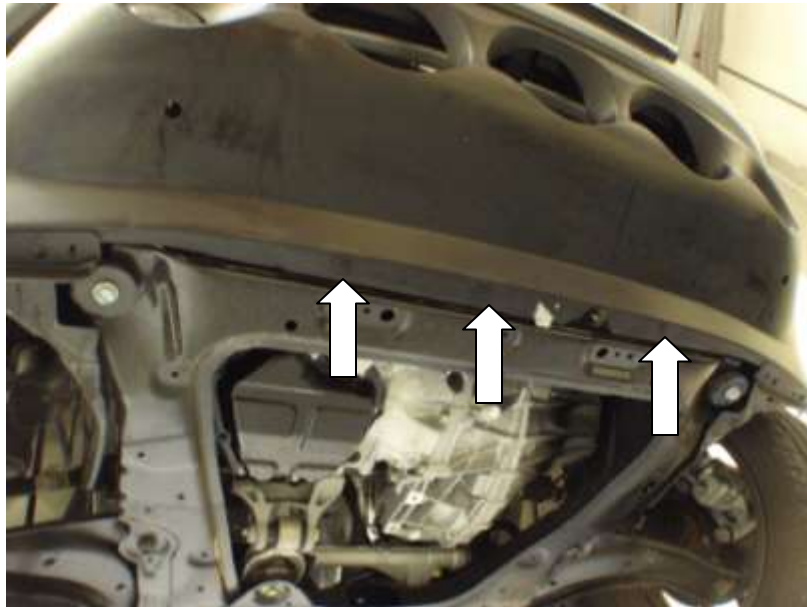


2. Using a small flat blade screwdriver or similar tool remove the 4 off plastic clips running along the top of grill.



Engineered for performance

3. Moving to the underside of the vehicle, remove the plastic clips in the centre of the bumper.



4. Using a Pozi Screwdriver remove both covers from in front of both wheels.



Engineered for performance

- Using a flat blade screwdriver remove the plastic clip located at the front in both wheel arches.



- Carefully pull the arch extension away from the bodywork.

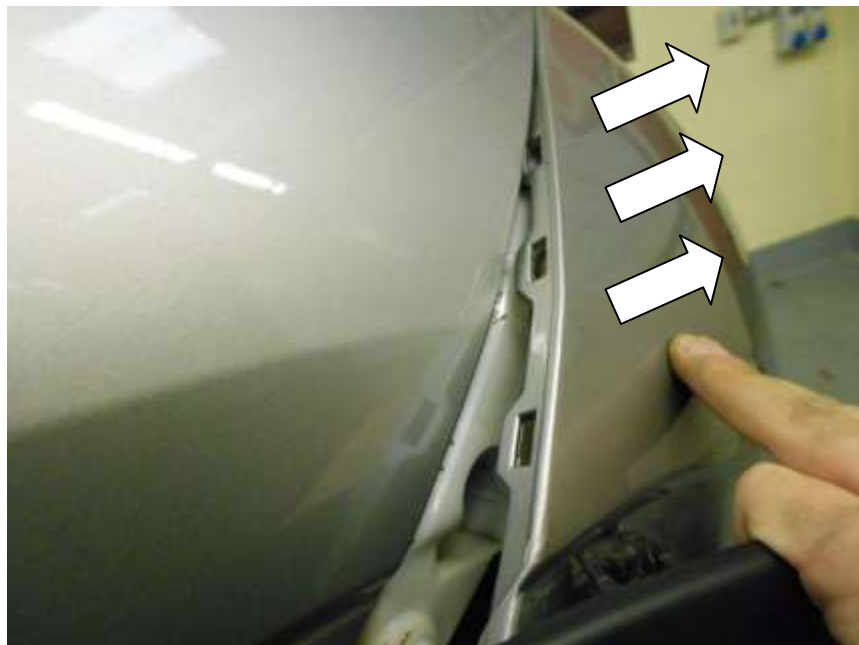


Engineered for performance

7. Pulling the arch extension to one side, use a 10mm spanner and undo the 1 off M6 bolt on both sides.

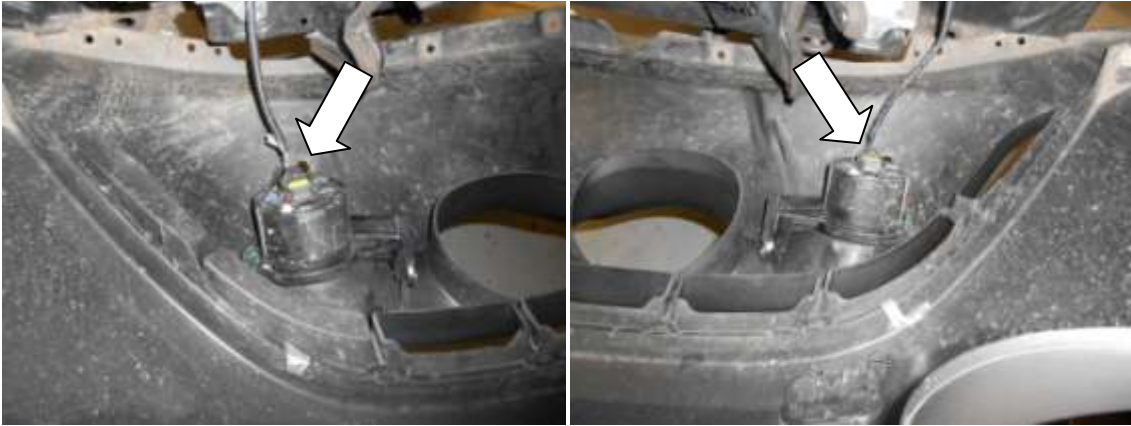


8. Carefully pull the bumper away from the clips that run up the bodywork and under the headlight. These are the last fixings holding the bumper to the vehicle.



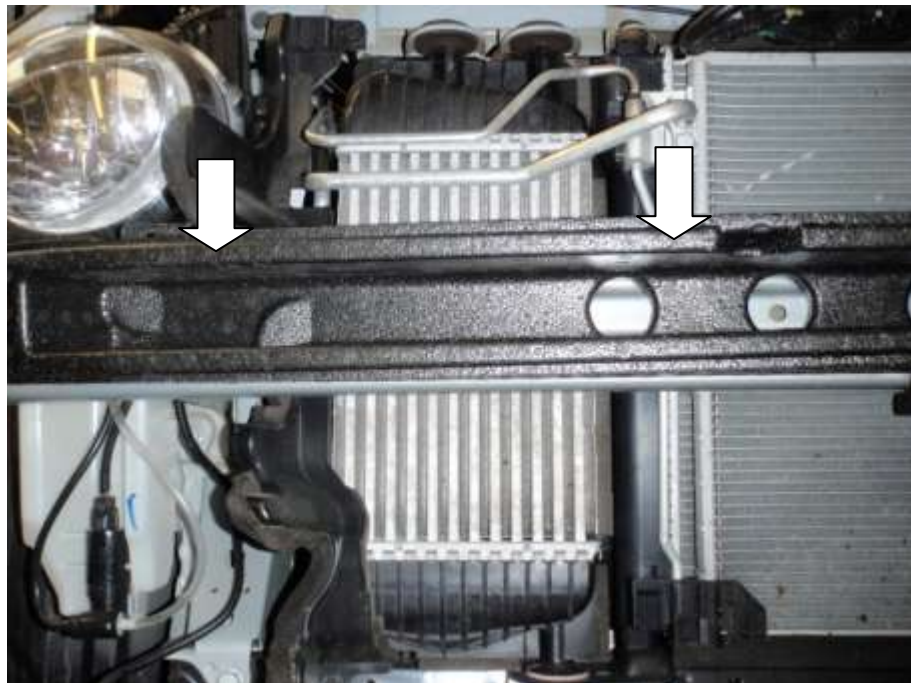
Engineered for performance

9. For this part you may require a second person. One person to hold the bumper while the second reaches inside to undo the connectors to the fog lights.



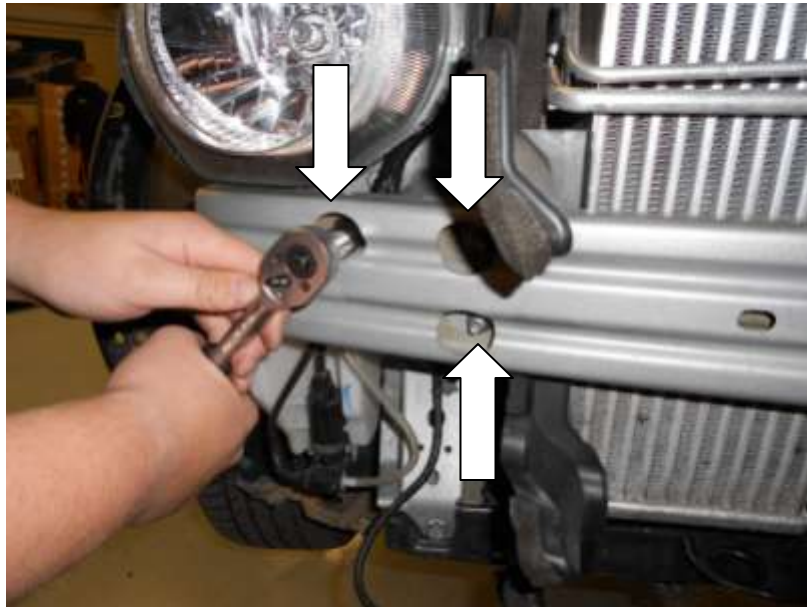
10. Place the bumper in a safe place to prevent damage while working on the rest of the vehicle.

11. Remove the foam crash bar cover and store away from the vehicle.



Engineered for performance

- Using a 13mm socket and extension bar undo the 3 off nuts at each end of the crash bar and remove it from the vehicle.



- Using a flat blade screwdriver remove the 2 off plastic clips on the air guide.



Engineered for performance

14. Moving to the engine bay, remove the engine cover, with a firm pull upwards. Using a 7mm hose clamp driver or flat blade screwdriver undo the 2 off jubilee clips.



15. Undo the jubilee clip on the intercooler inlet and remove the standard hose.



Engineered for performance

16. Using the 2 off large cable ties supplied. Secure the radiator and A/C to the front panel. One at each end of the radiator.



17. Using a 16mm socket remove the 2 off bolts at the front of the lower beam.



Engineered for performance

18. Using a 16mm socket partially undo the vertical bolt in the lower beam at the radiator end.

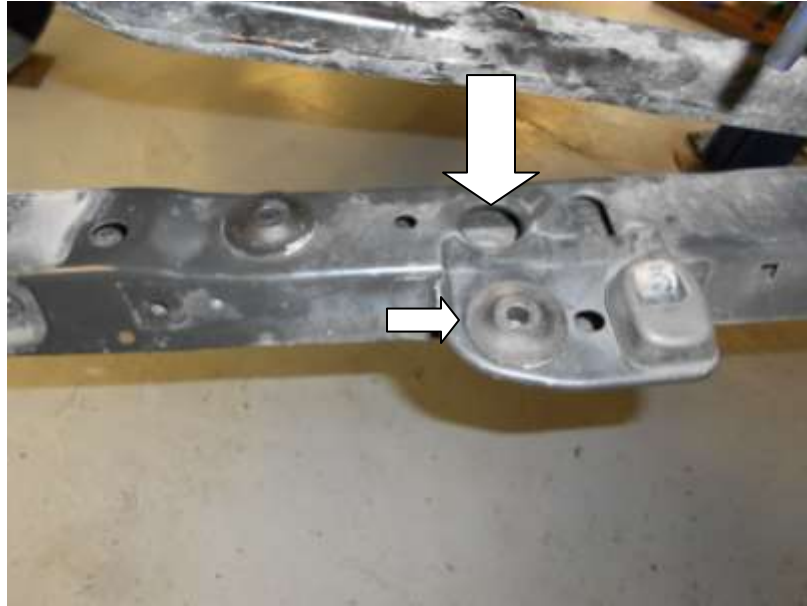


19. Carefully undo the vertical bolt in the lower beam at the intercooler end and the beam will drop away and the intercooler can be slid out of position.

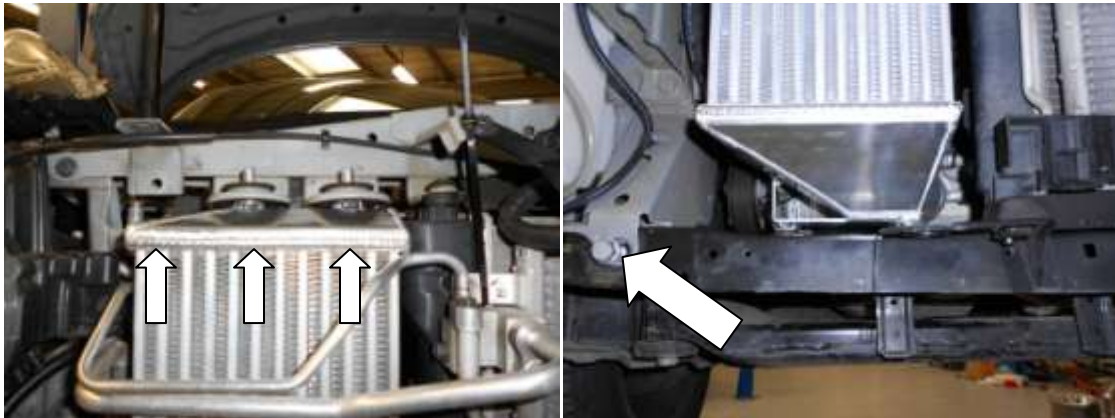


Engineered for performance

20. With the standard intercooler removed you are now ready to fit your new Forge Intercooler. Reposition one of the lower mounting bushes.



21. Carefully slide your Forge intercooler into position. Lift the lower beam into position and secure in position with one of the original 16mm fixings.



22. Secure the lower beam with the original bolts, refit the air guide and crash bar.

Engineered for performance

23. Moving back to the engine bay, unplug the MAP sensor and undo the bolt using a 10mm spanner. Remove the sensor and store in a safe place.



24. Using large pliers or a similar tool disconnect the pipes running to the dump valve.



Engineered for performance

25. Using a 7mm hose clamp driver undo the jubilee clip at the throttle body. Finally undo the 10mm bolt and the standard pipe work can be removed this will now have to be removed. Remove Dump valve from the standard pipe work and then attach it to the new hard pipe with the fixings provided. Remember to remove the standard sealing O-RING from the standard valve.
26. From the kit of silicone hoses and hard pipes provided select the alloy 60mm Dia. straight section and the unequal length 90 Deg. Bend and secure with a suitable jubilee clip.



27. From underneath the car feed this pipe up between the intercooler and engine. Secure the open end of the silicone bend to the intercooler outlet.
28. From the kit of silicone hoses and hard pipes select the curved alloy hard pipe and the 90 Deg. Silicone bend. Secure with a suitable jubilee clip.



Engineered for performance

29. Feed this pipe down between the intercooler and the engine from the top and secure with a suitable jubilee clip.

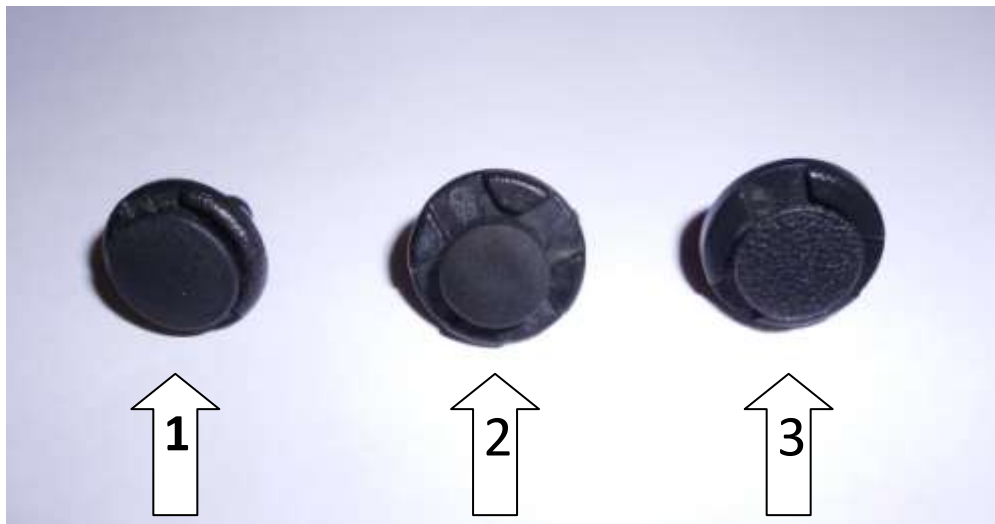


30. Secure the 70/60mm Silicone Reducer to the Throttle body outlet with a suitable jubilee clip.
31. Place the remaining 60mm silicone bend on the open outlet of the intercooler and secure with a clip. Into the open end fit the remaining hard pipe with dump valve fitted. Using the M6 x 16mm Allen head bolt and washer provided bolt the hard pipe to the original mounting point. Secure both ends with suitable jubilee clips.
32. Bolt the Map Sensor the sensor boss with the M6 x 12 mm and M6 washer provided. Reconnect the wiring.
33. Reconnect both pipes to the dump valve and secure with the original clips.
34. Finally using the remaining straight section of silicone hose, connect the turbo outlet to the hard pipe. Ensure that all the hose are in the correct position and not touching any of the bodywork or engine. Secure at both ends with the remaining jubilee clips.

Engineered for performance



35. Check all hose clamps and fixings before refitting the bumper. Follow steps 9 to 2 in reverse to reassemble your vehicle. ** Please Note: Three different types of plastic clips are used to retain the bodywork on the Juke. They are of different length and reassembly will be difficult if put in the wrong locations.



36. Type 1: 2 Slots – Inside both wheel arches and underneath bumper. Type 2: 4 Slots - Centre of the bumper underneath. Type 3: 3 Slots – Longer type for the top of the front bumper.

37. Your installation is now complete. Enjoy Your New Performance!

Check out WWW.FORGEMOTORSPORT.CO.UK and
WWW.FORGEMOTORSPORT.COM

For a full range of performance products for your vehicle.

As always, with any questions or concerns about this product or anything else, please feel free to contact your local or preferred Forge Motorsport Dealer/ Installer, or you may contact us directly.

Forge Motorsport UK – (+44)1 452 380 999 / info@forgemotorsport.co.uk

Forge Motorsport US – (407)-447-5363 / sales@forgemotorsport.com



Engineered for performance

