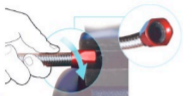




Step 1

Bind masking tape tightly around the hose at the required length and cut through using a fine tooth saw blade or cut off wheel, leaving tape on both ends so that it retains the braid. Clean any debris from both the cut ends and inside the hose



Step 3

Hold the socket in a smooth jaw vice and feed one end of the hose into the socket by turning clockwise and pushing until the hose finishes just behind the socket threads.



Step 6

Finish tightening the socket onto the fitting using a good quality wrench until the socket is one full turn from the back of the of the fitting hex.

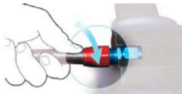


The socket (red)

Main fitting body (blue)

Step 2

On a clean flat surface disassemble the fitting. This consists of two parts. The Socket and Main Fitting Body



Step 5

Holding the main fitting body in the vice, lubricate the thread and push the hose and socket over the nipple end and start to thread the socket onto the fitting by hand.



Step 7

Pressure test.
